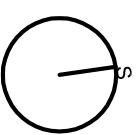
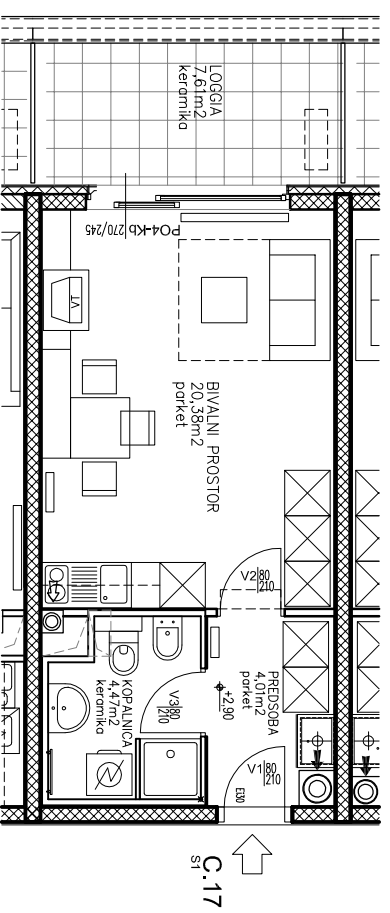


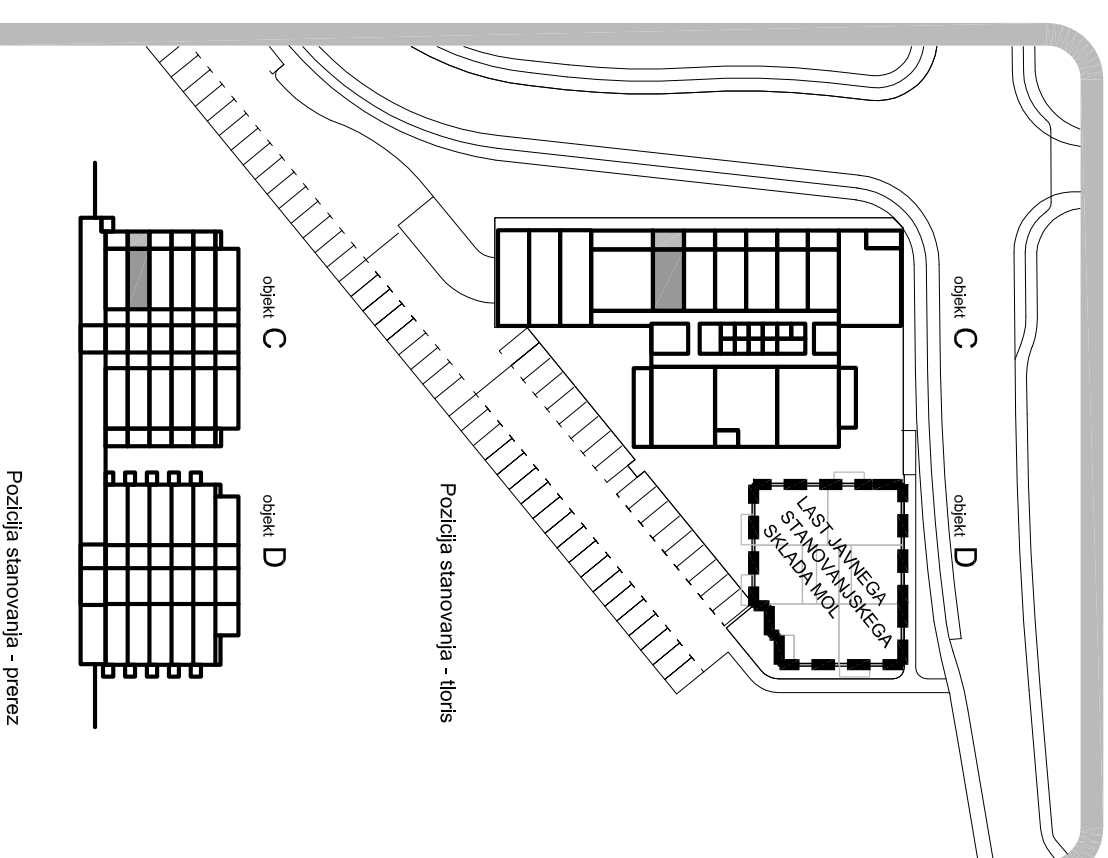
Stanovanjska zazidava Vič
 o. u. VS 3/2-1-Vič, m. e. 1 A/2
 večstanovanjska objekta
C in D
 komercialna shema

objekt **C**
 stanovanje
C.17
 1. nadstropje

| | | |
|-------|-------------------------------|----------------|
| S1 | C.17 | m ² |
| 1 | PREDSOBA | 4.01 |
| 2 | BIVALNI PROSTOR | 20.38 |
| 3 | KOPALNICA | 4.47 |
| X | UPORABNA PОВRŠINA | 28.86 |
| Y | POVRŠINA PREDELNIH STEN | 0.16 |
| A=X+Y | STANOVANJE | 29.02 |
| B | LOGGIA | 7.61 |
| G | SHRAMBA ŠT. s-C17 | 3.12 |
| A+B | NETO TLORISNA PОВRŠINA | 36.63 |
| A+B+G | SKUPNA NETO TLORISNA PОВRŠINA | 39.75 |



M 1:100 [1cm = 1m]



Pozicija stanovanja - tloris

Pozicija stanovanja - prerez