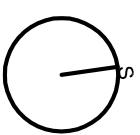
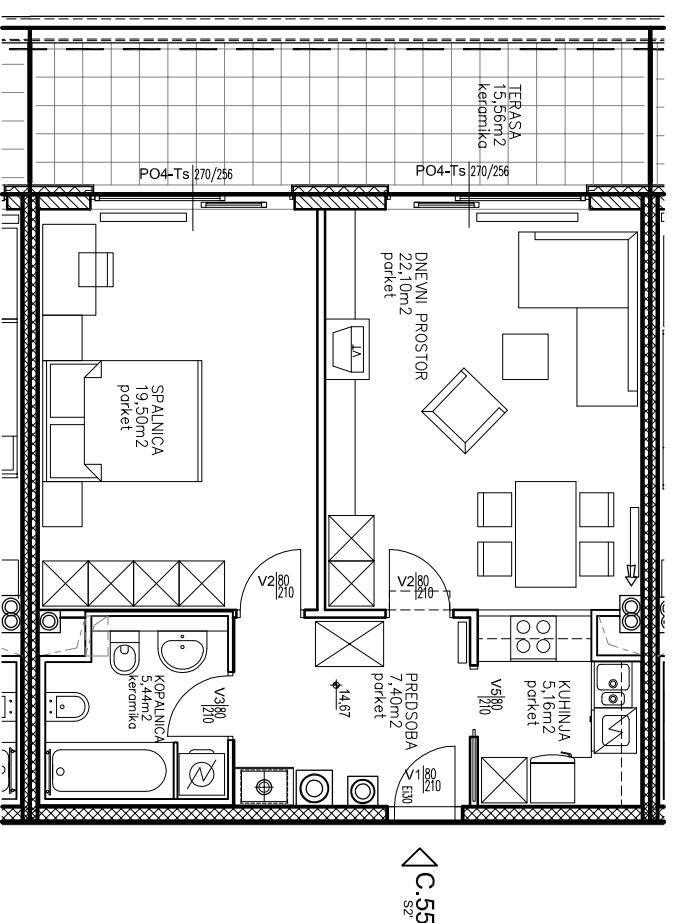


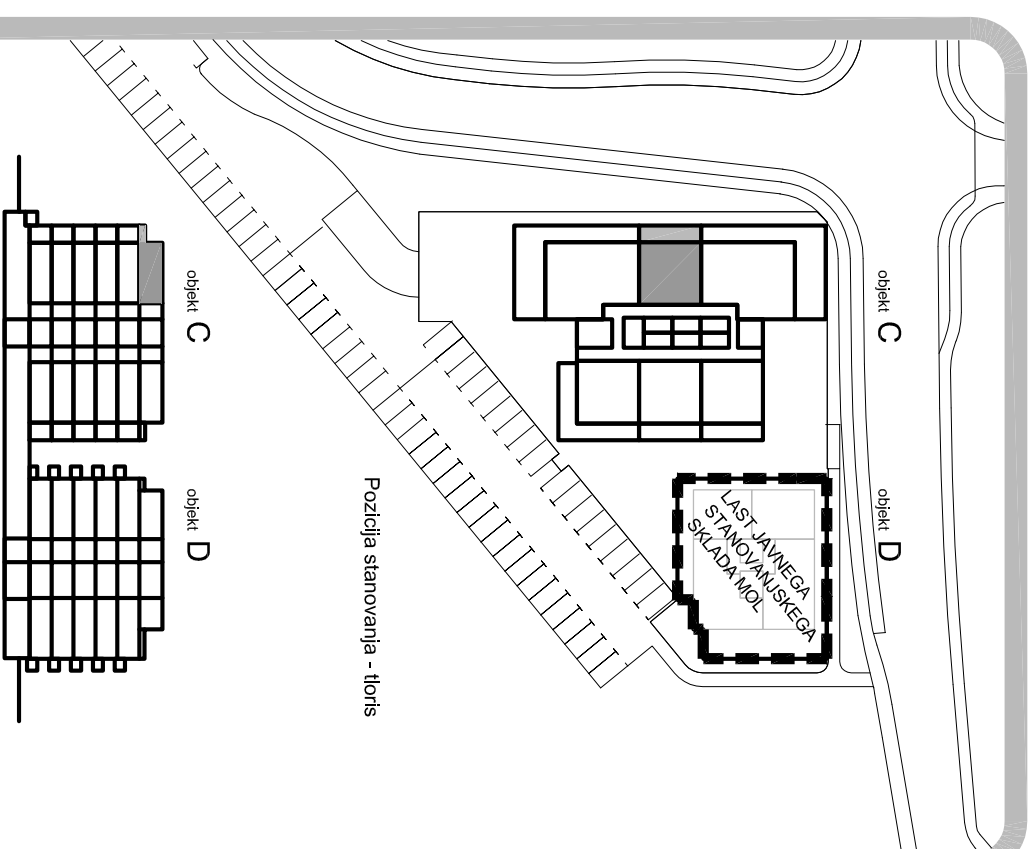
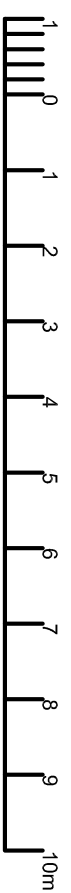
Stanovanjska zazidava Vič
 o. u. VS 3/2-1-Vič, m. e. 1 A/2
 večstanovanjska objekta
C in D
 komercialna shema

objekt **C**
 stanovanje
C.55
 terasna etaža

| SZ | | C.55 | m ² |
|-------|-------------------------|-------------------------------|----------------|
| 1 | PREDSOBA | 7.40 | 7.40 |
| 2 | DNEVNI PROSTOR | 22.10 | 22.10 |
| 3 | KUHINJA | 5.16 | 5.16 |
| 4 | SPALNICA | 19.50 | 19.50 |
| 5 | KOPALNICA | 5.44 | 5.44 |
| X | UPORABNA PLOŠČINA | 59.60 | 59.60 |
| Y | POVRŠINA PREDELNIH STEN | 1.10 | 1.10 |
| A=X+Y | | STANOVANJE | 60.70 |
| C | | TERASA | 15.56 |
| G | | SHRAMBA ŠT. s-C55 | 6.70 |
| A+C | | NETO TLOVISNA POVRŠINA | 76.26 |
| A+C+G | | SKUPNA NETO TLOVISNA POVRŠINA | 82.96 |



M 1:100 [1cm = 1m]



Pozicija stanovanja - prerez